

## PrevaLED COIN – Lenses

### – Accessories

---

#### Product family features

- Lenses for PL COIN 35, 50 and 111 G2



---

#### Product family benefits

- Simple lens exchange for switching the beam angle

---

#### Areas of application

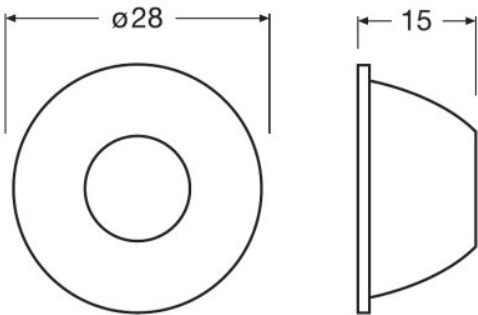
- Suitable for PL COIN 35, 50 and 111 G2

Product family datasheet

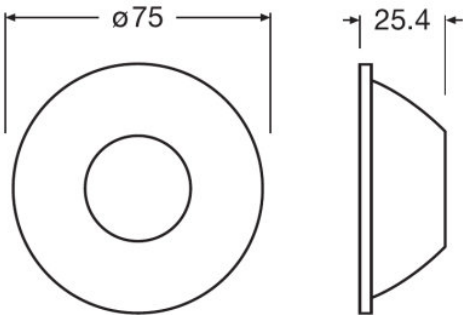
Technical data

	Dimensions & weight			Logistical data	Environmental information Information according Art. 33 of EU Regulation (EC) 1907/2006 (REACH)
Product description	Diameter	Product weight	Length	Commodity code	Date of Declaration
24D LENS FOR COIN 35 COB G2	28.0 mm	4.18 g	0.0 mm	90019000900	25-04-2022
36D LENS FOR COIN 35 COB G2	28.0 mm	4.78 g	0.0 mm	90019000900	25-04-2022
24D LENS FOR COIN 50 COB G2	41.6 mm	10.24 g	0.0 mm	90019000900	25-04-2022
40D LENS FOR COIN 50 COB G2	41.6 mm	11.26 g	0.0 mm	90019000900	25-04-2022
15D LENS FOR COIN 111 COB G2	75.0 mm	46.00 g	0.0 mm	90019000900	25-04-2022
24D LENS FOR COIN 111 COB G2	75.0 mm	46.00 g	0.0 mm	90019000900	25-04-2022
40D LENS FOR COIN 111 COB G2	75.0 mm	40.00 g	0.0 mm	90019000900	25-04-2022
60D LENS FOR COIN 111 COB G2	75.0 mm	45.00 g	0.0 mm	90019000900	25-04-2022

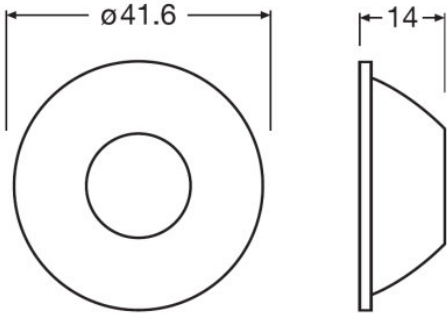
Product description	Primary Article Identifier	Candidate List Substance 1	Declaration No. in SCIP database
24D LENS FOR COIN 35 COB G2	4062172234993	No declarable substances contained	No declarable substances contained
36D LENS FOR COIN 35 COB G2	4062172235013	No declarable substances contained	No declarable substances contained
24D LENS FOR COIN 50 COB G2	4062172235037	No declarable substances contained	No declarable substances contained
40D LENS FOR COIN 50 COB G2	4062172235051	No declarable substances contained	No declarable substances contained
15D LENS FOR COIN 111 COB G2	4062172235075	No declarable substances contained	No declarable substances contained
24D LENS FOR COIN 111 COB G2	4062172235099	No declarable substances contained	No declarable substances contained
40D LENS FOR COIN 111 COB G2	4062172235112	No declarable substances contained	No declarable substances contained
60D LENS FOR COIN 111 COB G2	4062172235150	No declarable substances contained	No declarable substances contained



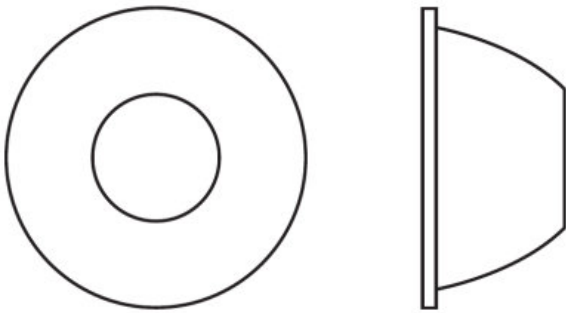
LENS FOR COIN COB G2



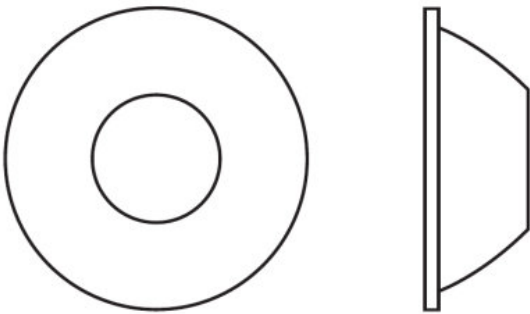
LENS FOR COIN COB G2



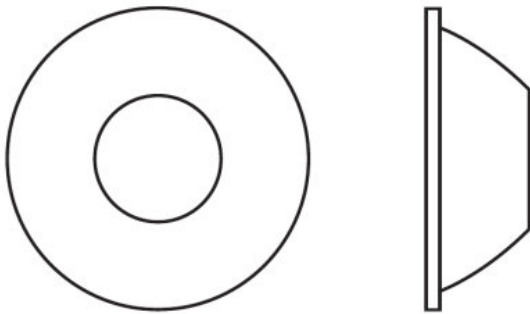
LENS FOR COIN COB G2



LENS FOR COIN COB G2



LENS FOR COIN COB G2



LENS FOR COIN COB G2

# Product family datasheet


## Application advice

For more detailed application information and graphics please see product datasheet.

## Sales and Technical Support

Sales and Technical Support [www.osram.com](http://www.osram.com)

## Download Data

File	
	User instruction LENS COIN COB G2 UI 15097949 091221

## Logistical Data

Product code	Product description	Packaging unit (Pieces/Unit)	Dimensions (length x width x height)	Volume	Gross weight
4062172234993	24D LENS FOR COIN 35 COB G2	Shipping carton box 100	248 mm x 205 mm x 110 mm	5.59 dm <sup>3</sup>	670.00 g
4062172235013	36D LENS FOR COIN 35 COB G2	Shipping carton box 100	248 mm x 205 mm x 110 mm	5.59 dm <sup>3</sup>	730.00 g
4062172235037	24D LENS FOR COIN 50 COB G2	Shipping carton box 100	248 mm x 205 mm x 110 mm	5.59 dm <sup>3</sup>	1276.00 g
4062172235051	40D LENS FOR COIN 50 COB G2	Shipping carton box 100	248 mm x 205 mm x 110 mm	5.59 dm <sup>3</sup>	1378.00 g
4062172235075	15D LENS FOR COIN 111 COB G2	Shipping carton box 60	345 mm x 225 mm x 170 mm	13.20 dm <sup>3</sup>	3321.00 g
4062172235099	24D LENS FOR COIN 111 COB G2	Shipping carton box 60	345 mm x 225 mm x 170 mm	13.20 dm <sup>3</sup>	3321.00 g
4062172235112	40D LENS FOR COIN 111 COB G2	Shipping carton box 60	345 mm x 225 mm x 170 mm	13.20 dm <sup>3</sup>	2961.00 g
4062172235150	60D LENS FOR COIN 111 COB G2	Shipping carton box 60	345 mm x 225 mm x 170 mm	13.20 dm <sup>3</sup>	3261.00 g

The mentioned product code describes the smallest quantity unit which can be ordered. One shipping unit can contain one or more single products. When placing an order, for the quantity please enter single or multiples of a shipping unit.

### Disclaimer

Subject to change without notice. Errors and omission excepted. Always make sure to use the most recent release.