

Lampholders



Product family benefits

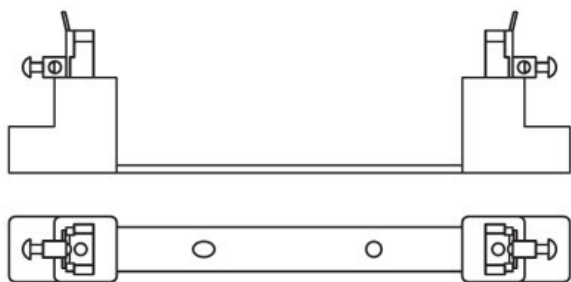
- Lampholders from the same source as the relevant lamps
- Availability of a wide range of lampholders
- Optimum quality at an attractive price

Product family features

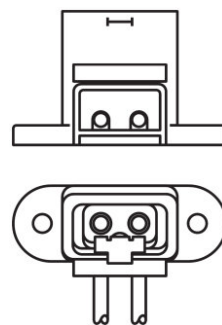
- Mature tried and tested contact principle



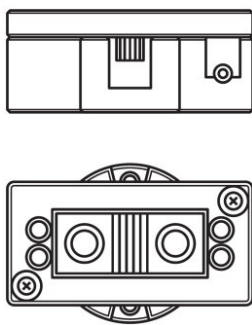
Product family datasheet



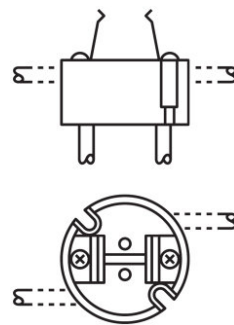
327138_Lampholder SharXs SFC 10-4, SharXs SFC 10-4 Prefocus



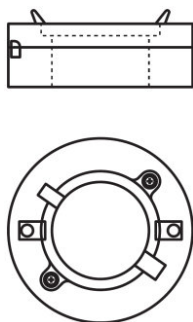
327139_Lampholder TP22-HCE PAR, TP22-HCE S4, TP22-HCE



327150_LAMPHOLDER G38



327152_LAMPHOLDER GY9,5



327136_Lampholder Lok-It! PGJX50 VS24, Lok-It! PGJX50 VS1

Product family datasheet

Technical data

Product description	Electrical data				Dimensions & weight
	Lamp wattage	Lamp voltage	Ignition voltage	Lamp current	Lead cross section of lead or clamp
LAMPHOLDER SharXS SFc10-4	1500 W	1000 V	25 kVp ¹⁾	15.0 A	1.31...3.31 mm ²
LAMPHOLDER TP22H/CE	1000 W	250 V			1.31 mm ² ²⁾
LAMPHOLDER G38	5000 W	1000 V	50 kVp ¹⁾	50.0 A	2.08...13.30 mm ²
LAMPHOLDER GY9.5	500 W	1000 V	5.0 kVp ¹⁾		0.82 mm ² ²⁾
LAMPHOLDER LOK-IT! PGJX50	1500 W	250 V	5.0 kVp ¹⁾	16.0 A	1.31...3.31 mm ²

Product description	Temperatures & operating conditions	Environmental information Information according Art. 33 of EU Regulation (EC) 1907/2006 (REACH)		
	Max. permitted ambient temp. pinch point	Date of Declaration	Primary Article Identifier	Declaration No. in SCIP database
LAMPHOLDER SharXS SFc10-4	250 °C	19-01-2022	4008321302175	In work
LAMPHOLDER TP22H/CE		19-01-2022	4008321335241	In work
LAMPHOLDER G38	350 °C	19-01-2022	4008321355980	In work
LAMPHOLDER GY9.5		19-01-2022	4008321356000	In work
LAMPHOLDER LOK-IT! PGJX50	350 °C	19-01-2022	4008321404725 4008321404718	In work

¹⁾ Maximum (pulse rating; peak voltage can be up to 1.4 times higher)

²⁾ Leads attached

Product family datasheet

Application advice

For more detailed application information and graphics please see product datasheet.

Disclaimer

Subject to change without notice. Errors and omission excepted. Always make sure to use the most recent release.